

East Carolina University

# Comprehensive Facilities Master Plan

**SMITHGROUP | JJR**

Eva Klein & Associates

Brailsford & Dunlavey

Kurt Salmon & Associates

RMF Engineers

Martin Alexiou Bryson

Protection Engineering Group

ISES

# East Carolina University \\\ Comprehensive Facilities Master Plan

- General Improvements
  - Pedestrian / Bicycle
  - Transit
  - Parking
- Specific Improvements
  - Health Sciences Campus
  - Main Campus

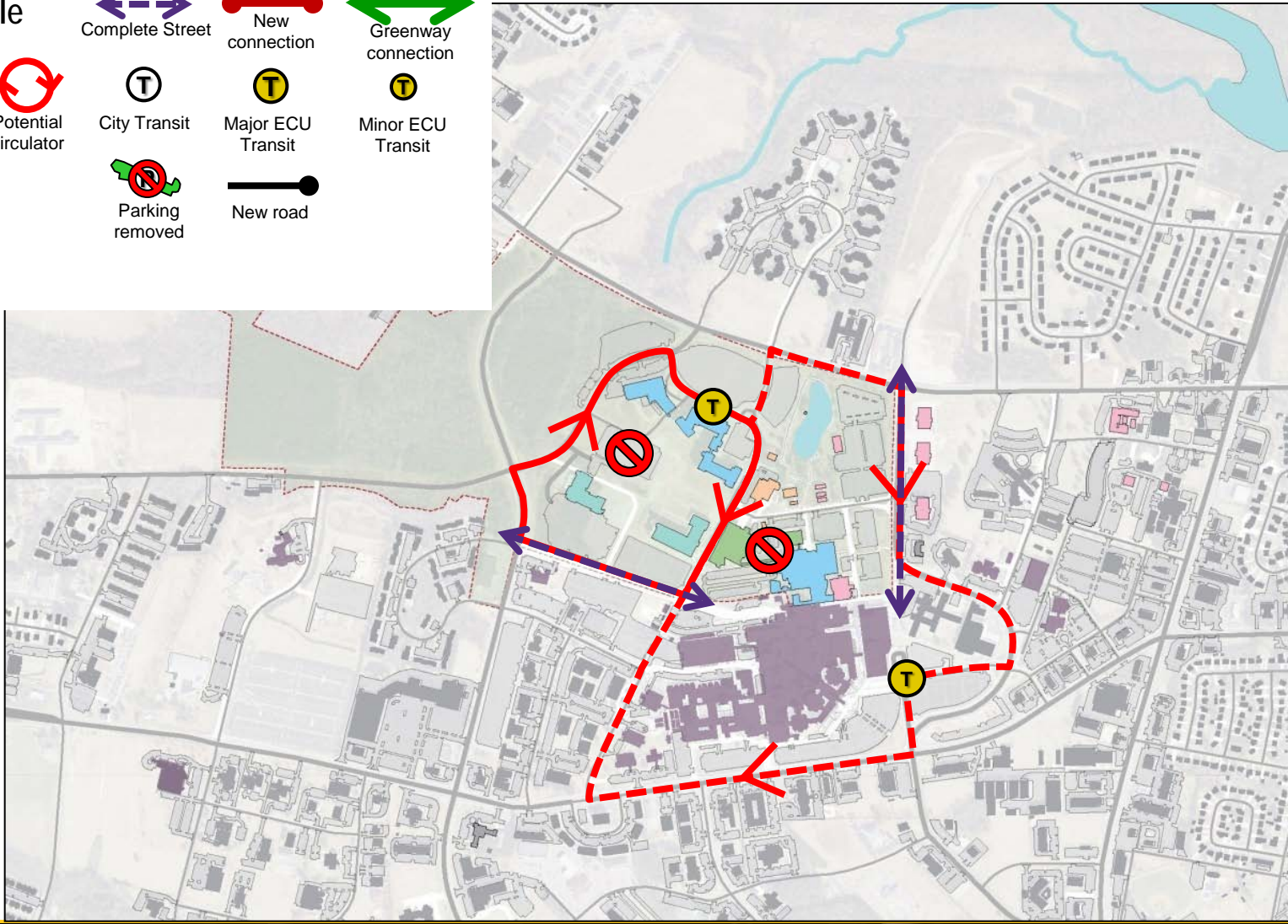
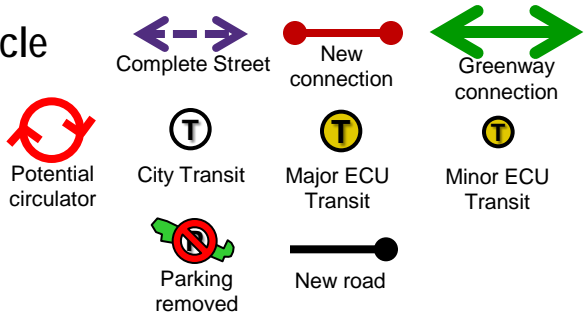


**Agenda**

# General Improvements

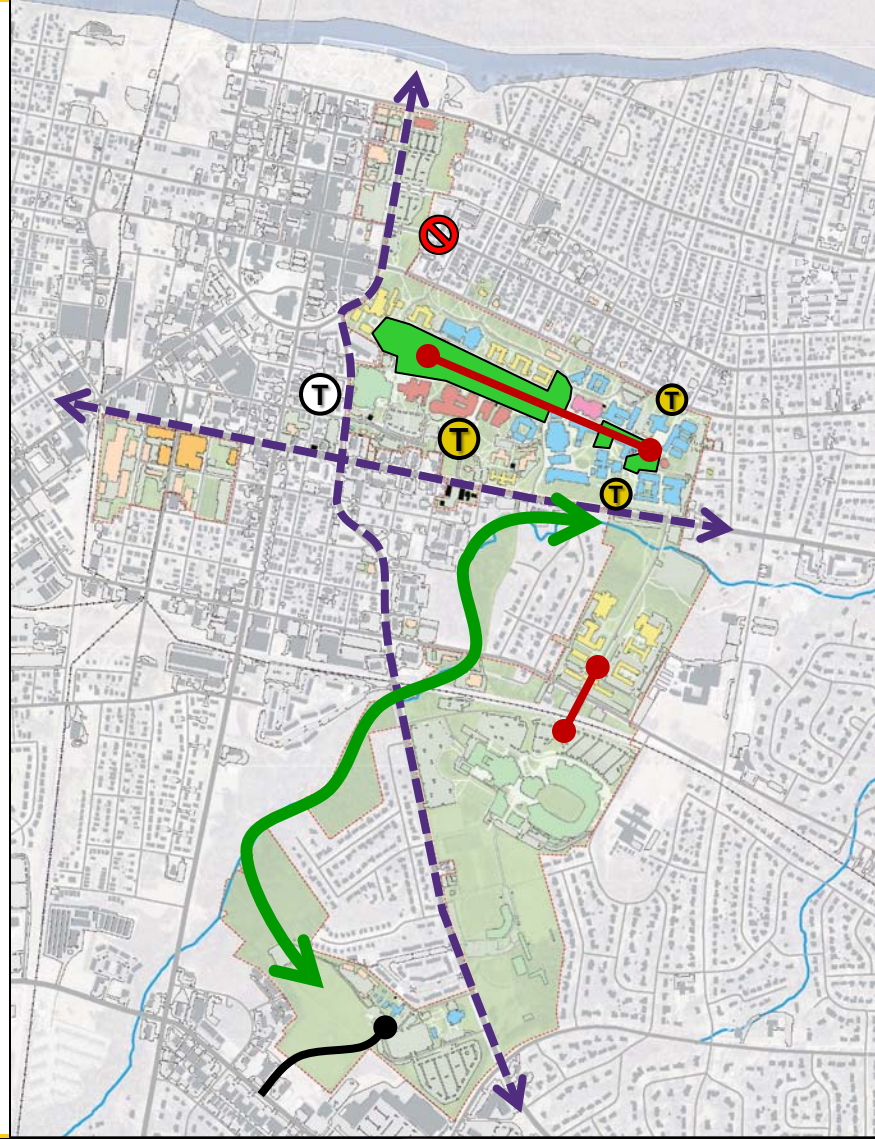
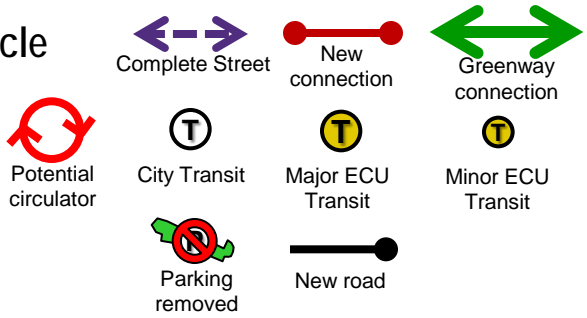
# East Carolina University \ Comprehensive Facilities Master Plan

- Pedestrian / Bicycle
- Transit
- Parking



# East Carolina University \ Comprehensive Facilities Master Plan

- Pedestrian / Bicycle
- Transit
- Parking



# East Carolina University // Comprehensive Facilities Master Plan

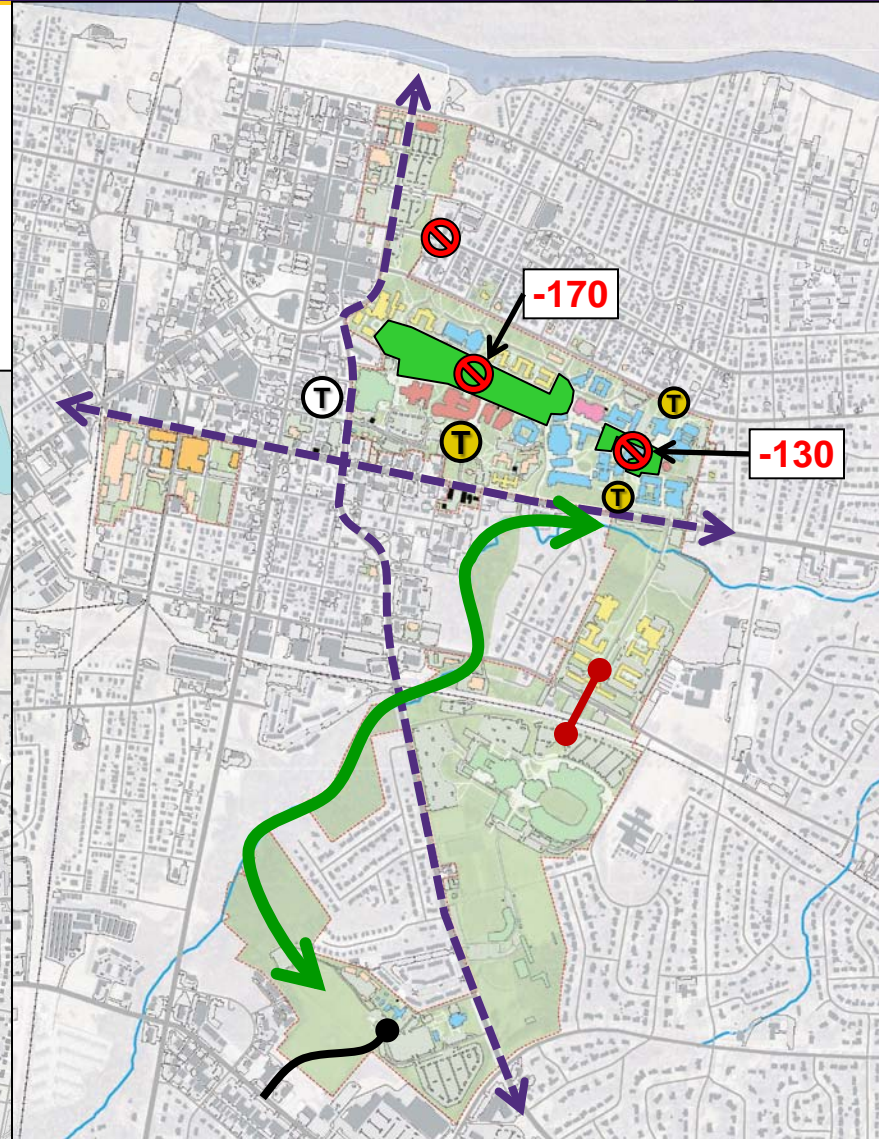
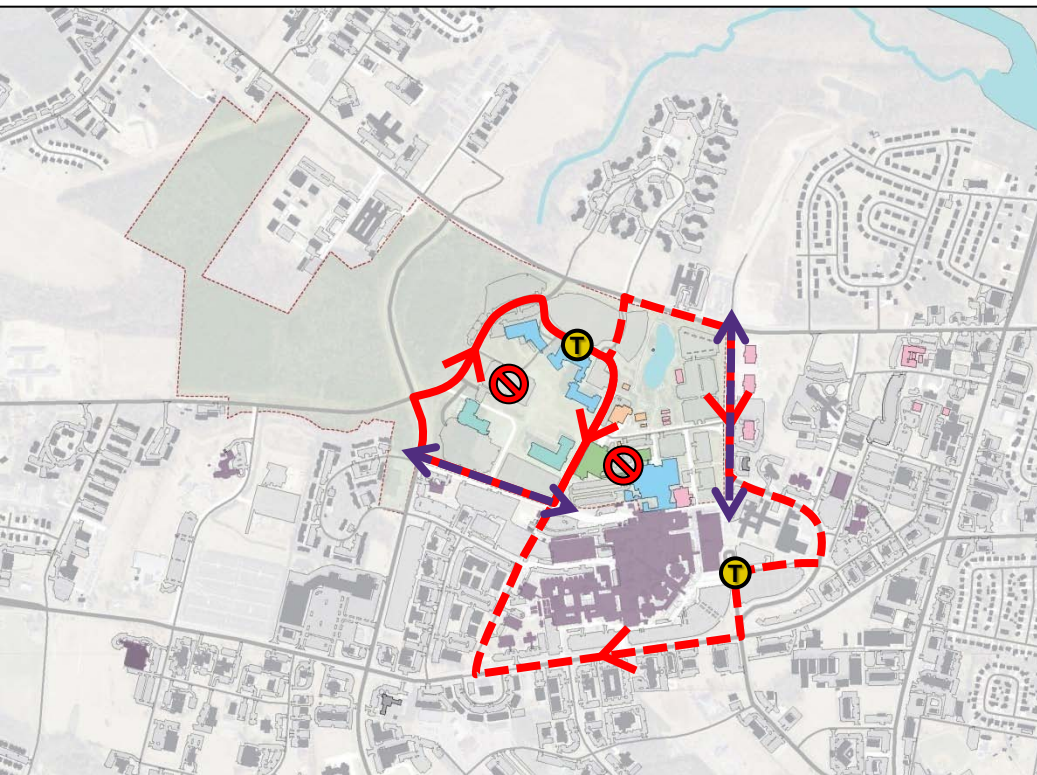
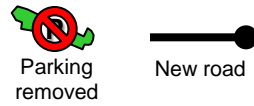
- Pedestrian / Bicycle



- Transit



- Parking



# Specific Improvements

# East Carolina University \ Comprehensive Facilities Master Plan

- Pedestrian / Bicycle
- Transit
- Parking

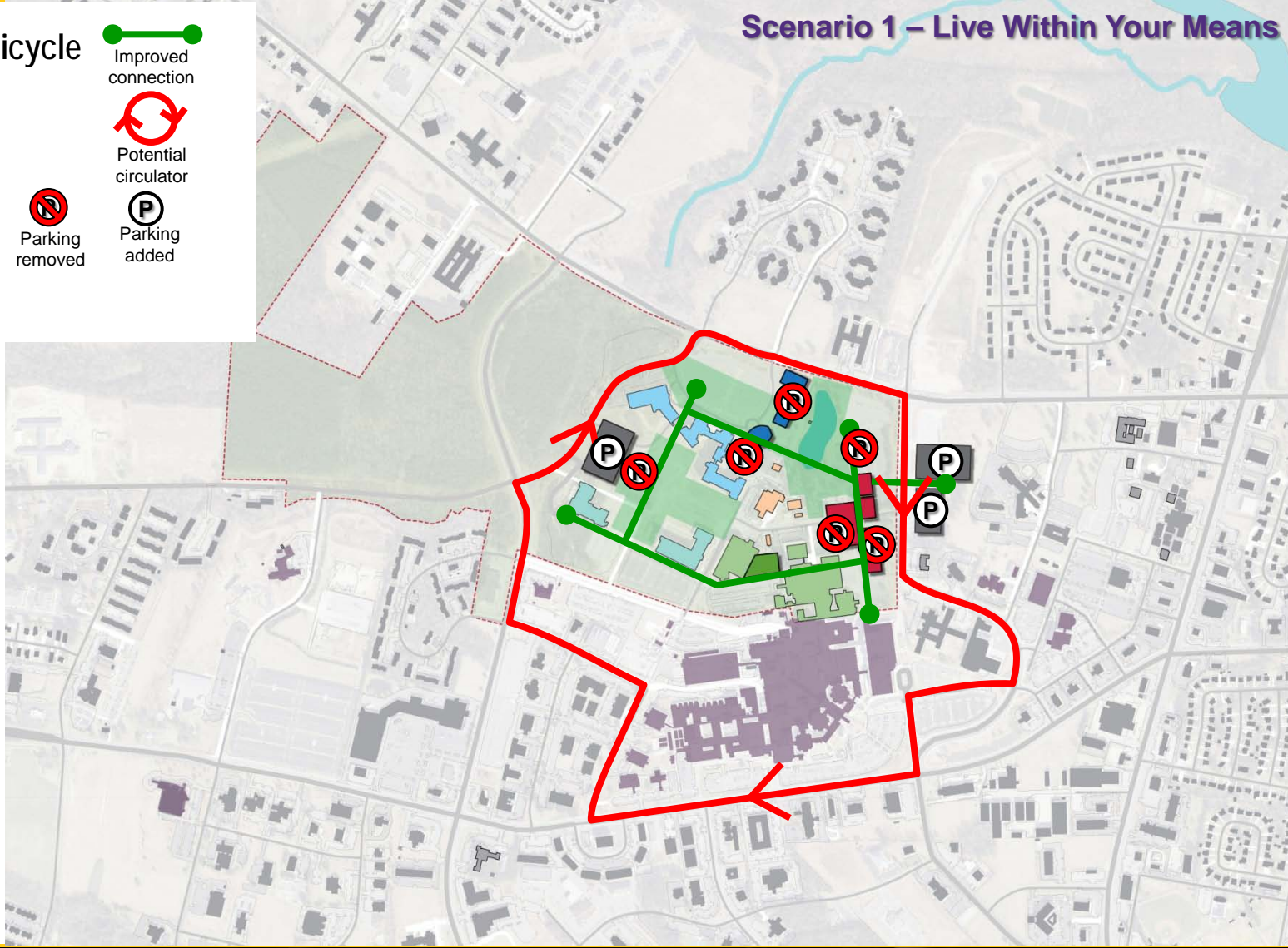
Improved connection

Potential circulator

Parking removed

Parking added

## Scenario 1 – Live Within Your Means



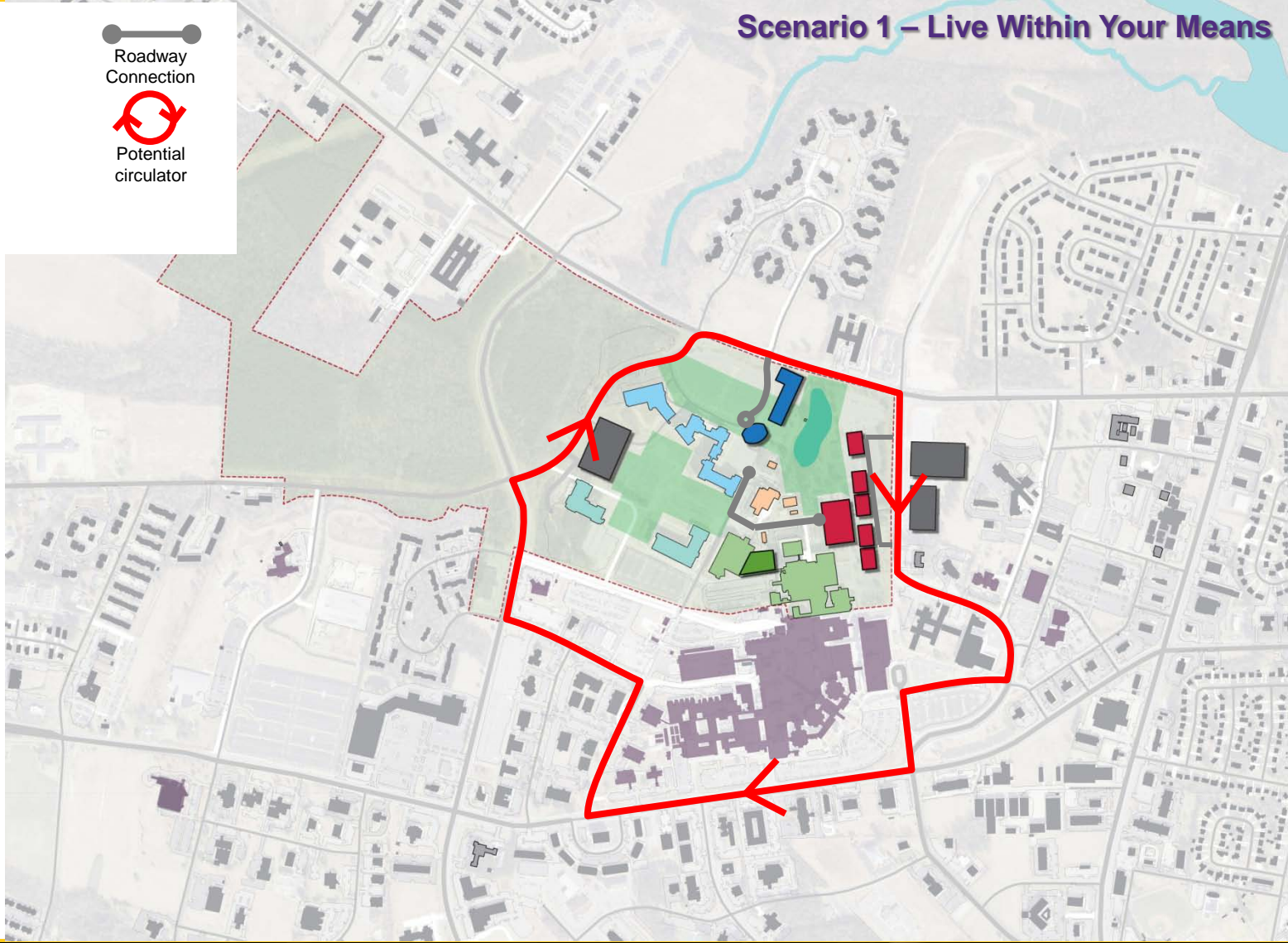


# East Carolina University \ Comprehensive Facilities Master Plan

- Roadway
- Transit



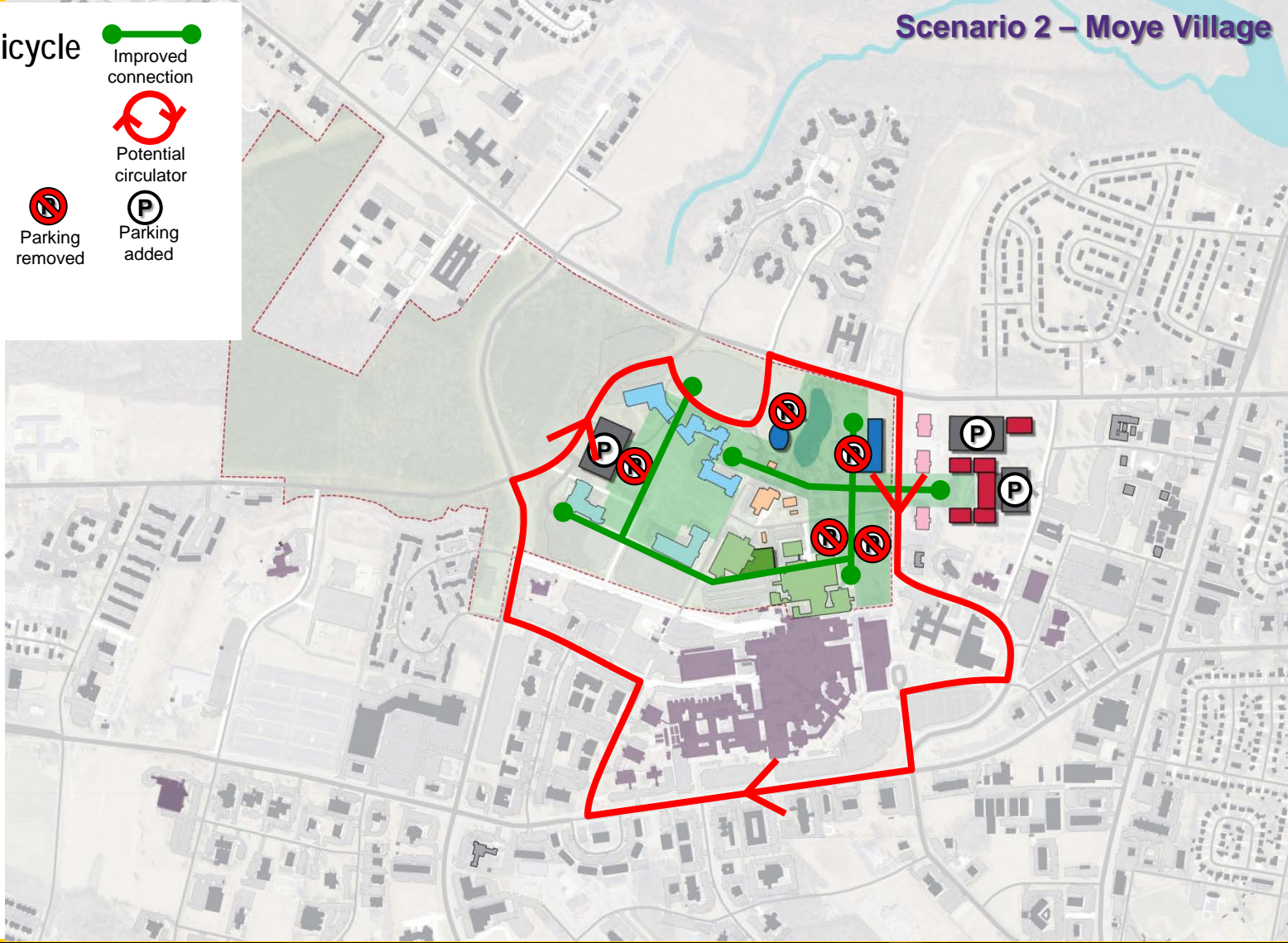
## Scenario 1 – Live Within Your Means



# East Carolina University \ Comprehensive Facilities Master Plan

## Scenario 2 – Moye Village

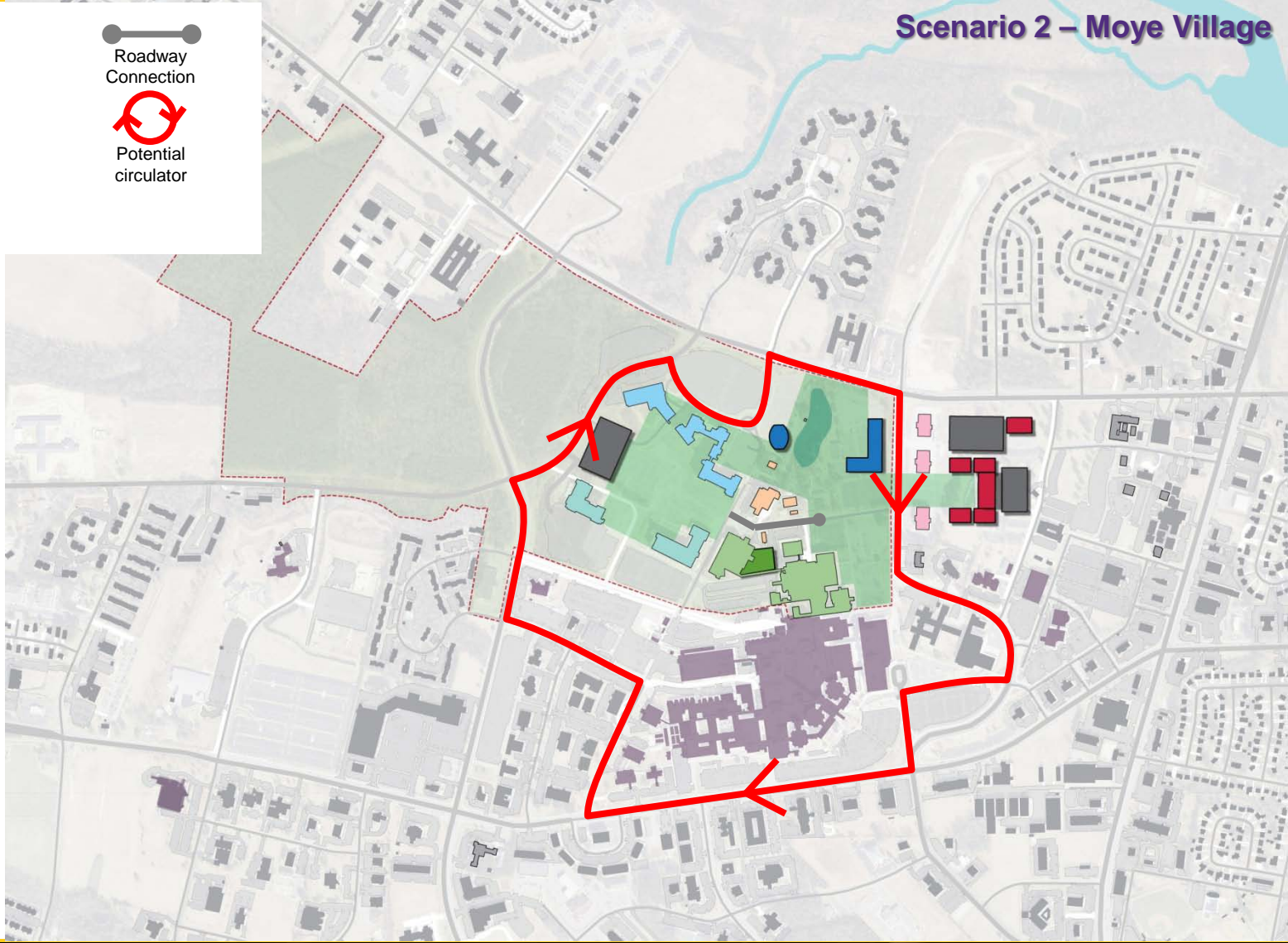
- Pedestrian / Bicycle  Improved connection
- Transit  Potential circulator
- Parking  Parking removed  Parking added



# East Carolina University \ Comprehensive Facilities Master Plan

## Scenario 2 – Moye Village

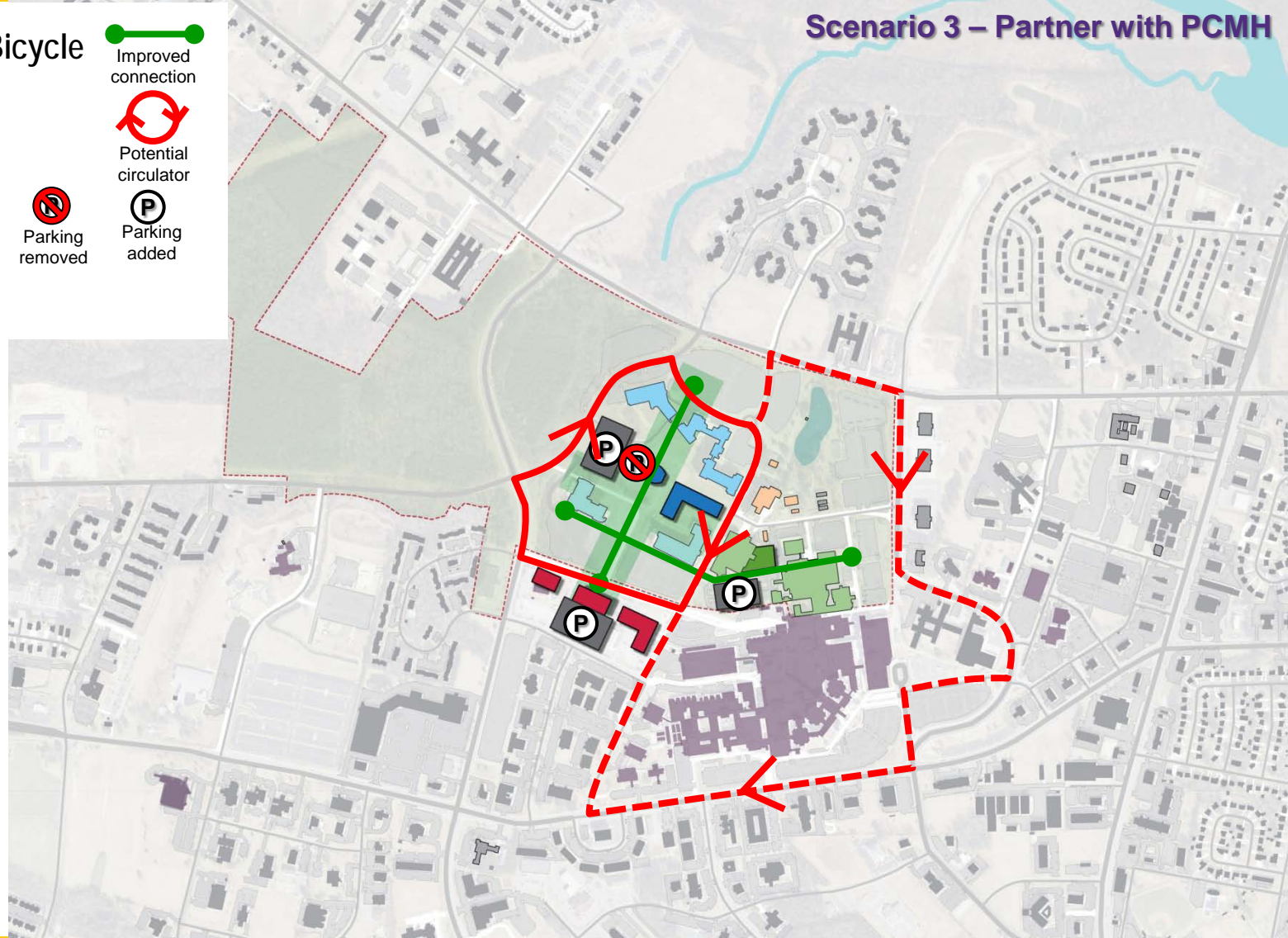
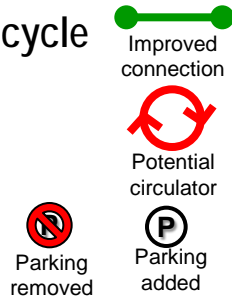
- Roadway
- Transit



# East Carolina University \ Comprehensive Facilities Master Plan

## Scenario 3 – Partner with PCMH

- Pedestrian / Bicycle
- Transit
- Parking

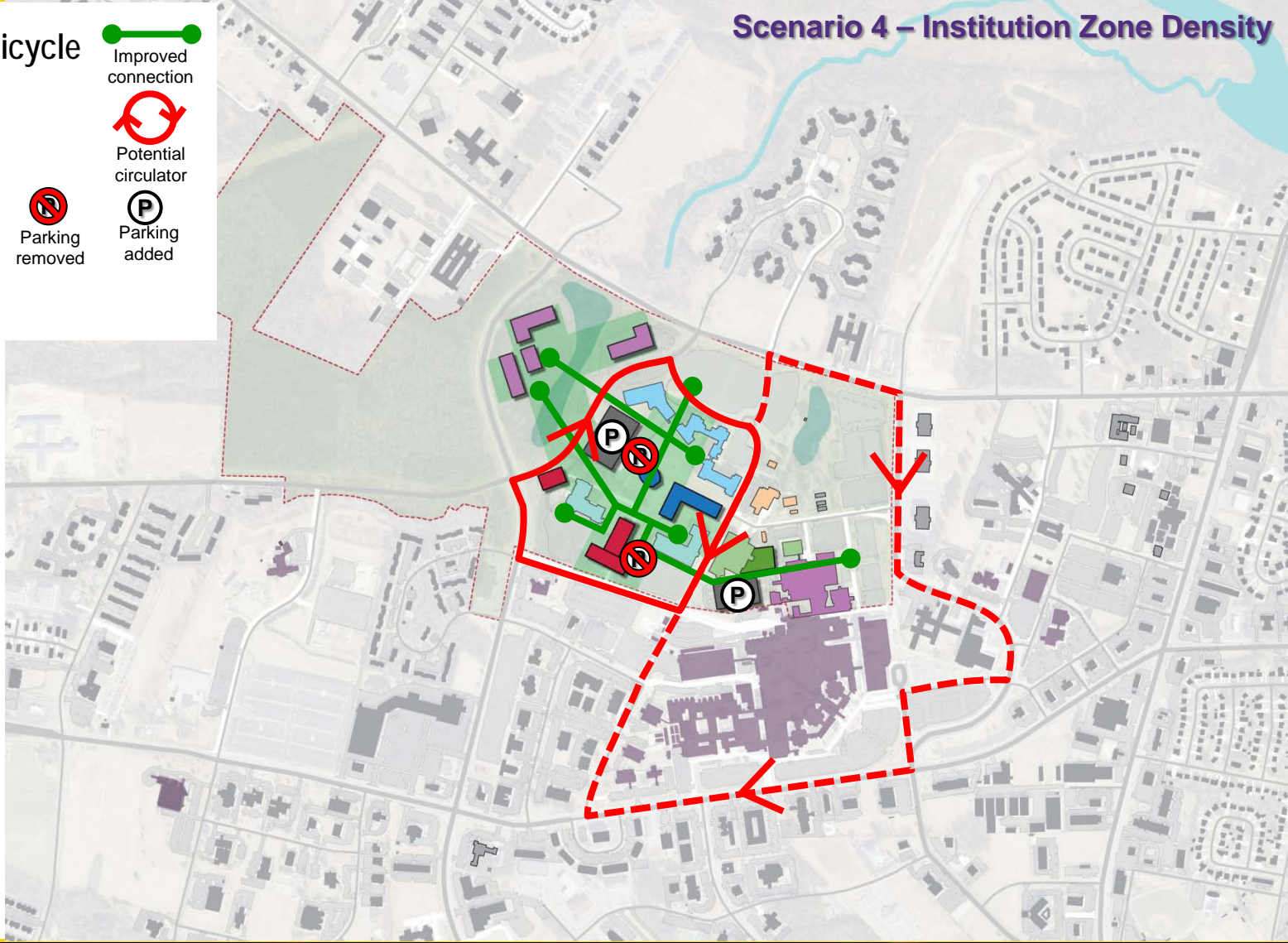


# East Carolina University \ Comprehensive Facilities Master Plan

## Scenario 4 – Institution Zone Density

- Pedestrian / Bicycle
- Transit
- Parking

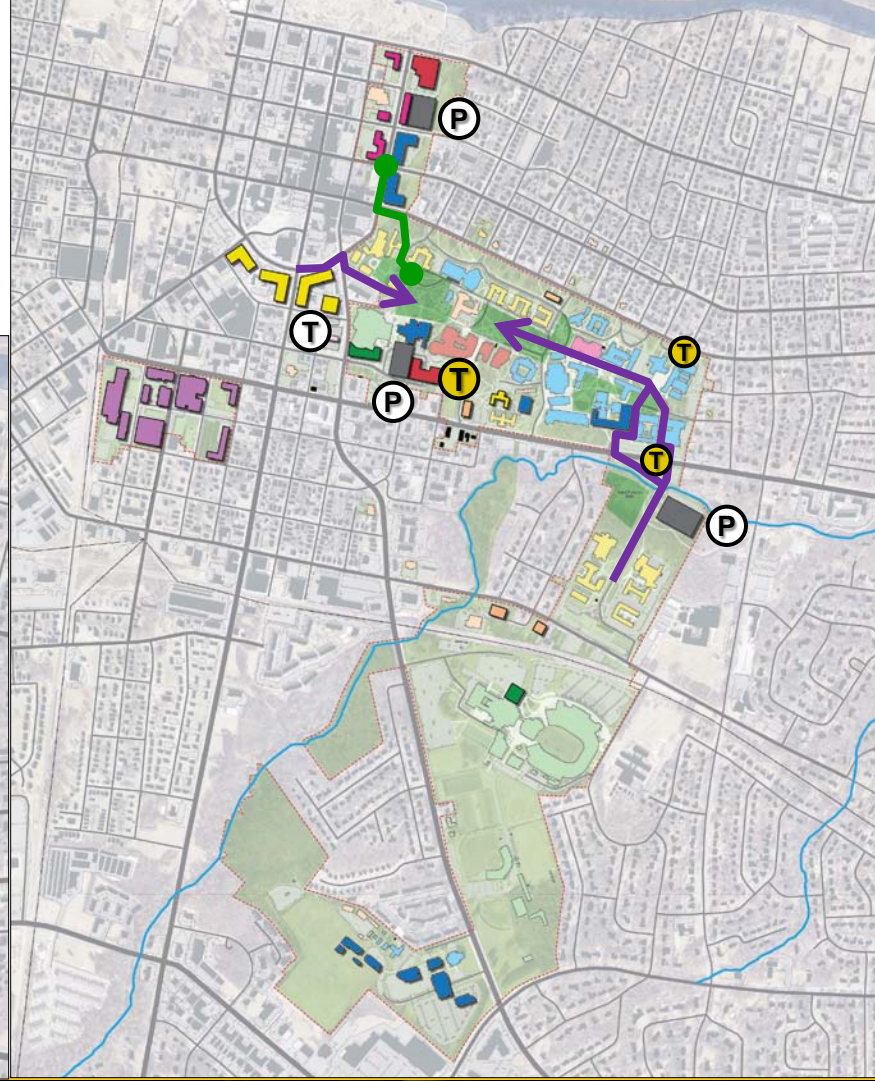
- Improved connection
- Potential circulator
- Parking removed
- Parking added



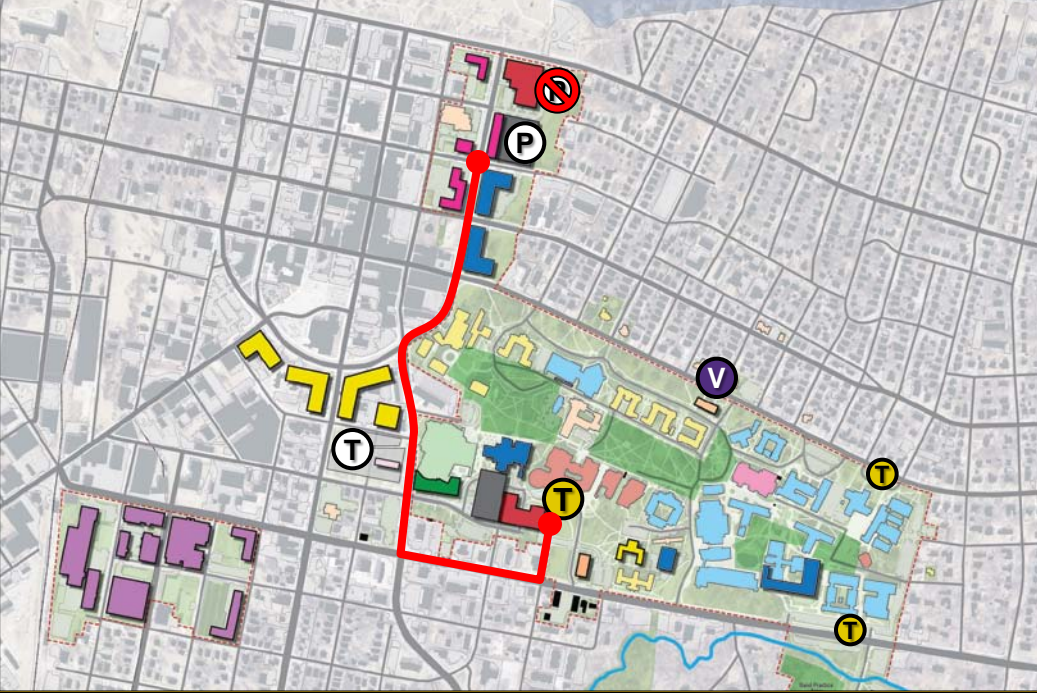
# East Carolina University // Comprehensive Facilities Master Plan

- Pedestrian / Bicycle
  - Pedestrian route from residence hall
  - Pedestrian route from academic
- Transit
  - T City Transit
  - T Major ECU Transit
  - T Minor ECU Transit
  - Additional service
- Parking
  - ⊘ Parking removed
  - P Structured parking added
  - V Visitor parking

## Scenario 1 – Go North



## Scenario 1 – Go North

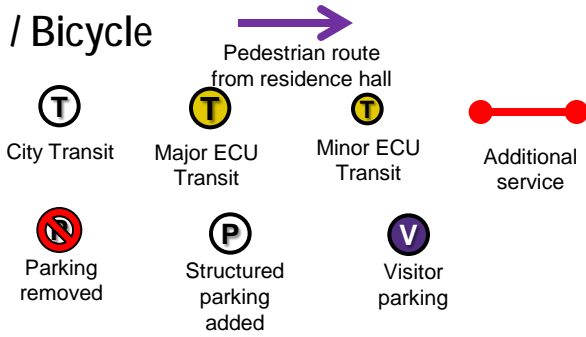


# East Carolina University || Comprehensive Facilities Master Plan

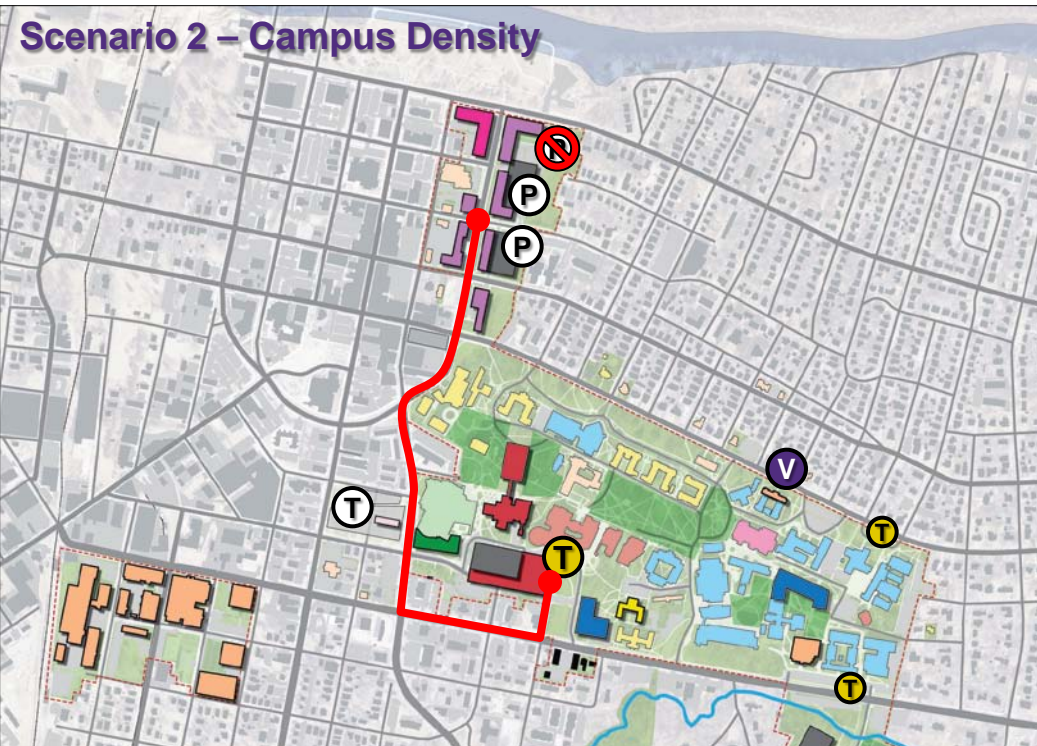
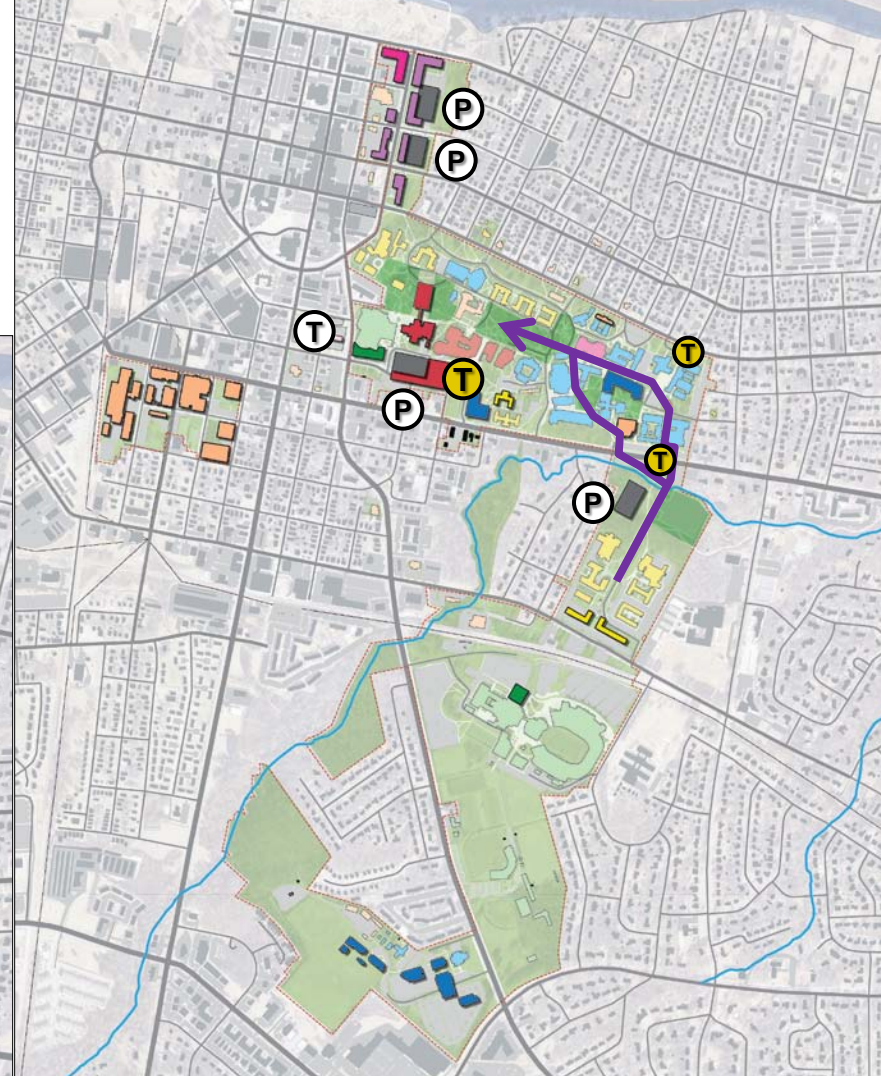
- Pedestrian / Bicycle

- Transit

- Parking



## Scenario 2 – Campus Density



# East Carolina University // Comprehensive Facilities Master Plan

- Pedestrian / Bicycle
  - Pedestrian route from residence hall
  - Pedestrian route from academic
- Transit
  - T City Transit
  - T Major ECU Transit
  - T Minor ECU Transit
  - Additional service
- Parking
  - ⊘ Parking removed
  - P Structured parking added
  - V Visitor parking

