

	Parking & Traffic Department	Student Transit Authority
Sustainable Practice	<ul style="list-style-type: none"> • “Real-cost” permit sales • Occupancy-based permit sales • “Park once” emphasis • Travel Demand Management programs • Long-range parking strategies 	<ul style="list-style-type: none"> • Service area limitations (off-campus) • Formalized bus stop locations and times • Easy transfers to other transit systems • Capital improvement planning • Coordinated service planning
Non-Sustainable Practice	<ul style="list-style-type: none"> • Subsidized parking permit costs • Subsidized parking deck construction • Maximum permit flexibility (drive to meetings) • “Hunting” for parking spaces • Free visitor parking 	<ul style="list-style-type: none"> • Subsidize (25%) of costs to apartment complexes • Demand-responsive route planning • Non-Transparent decision making • Temporary or improvised bus stops/transfer areas • Renting bus dispatch/storage location
Caveats	<ul style="list-style-type: none"> • Parking enforcement “liaison” program • 5-Year financial plan • Departmental outreach program 	<ul style="list-style-type: none"> • Full-time driver safety coordinator • Formal data collection program • Departmental outreach program

Transit, Parking, Pedestrian MAB

Transit Master Planning Questions

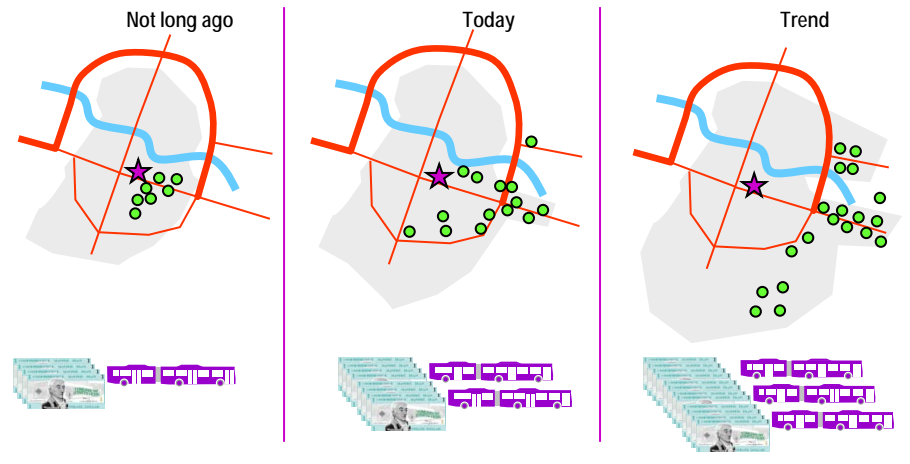
- Where do you want the East, Athletic, and Health Sciences Campus bus stops/stations?
- Where do you want the Bus Maintenance (dispatch and bus storage) Facility?
- Where will new students live?

Transit Supports Sustainability Goals

- Traffic volumes
- Pedestrian safety
- Air quality
- Land for parking
- Storm water management
- Cost of car ownership



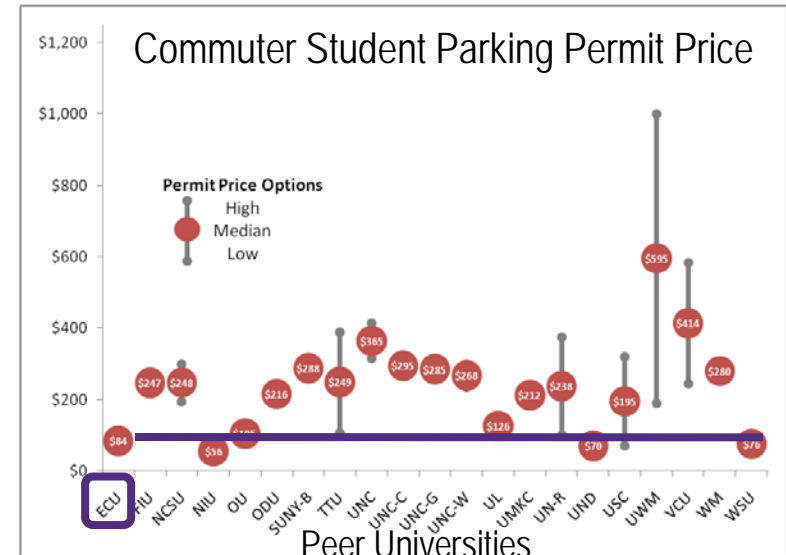
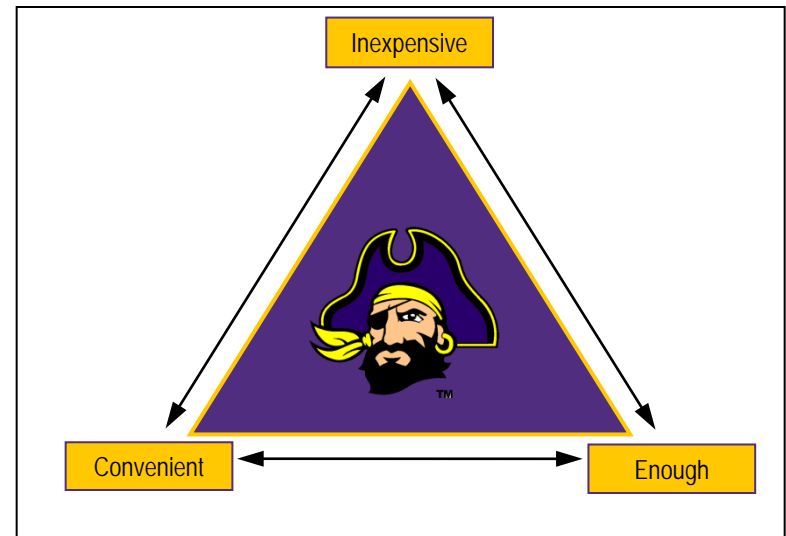
Apartments are Spreading Out...Trend is Unsustainable

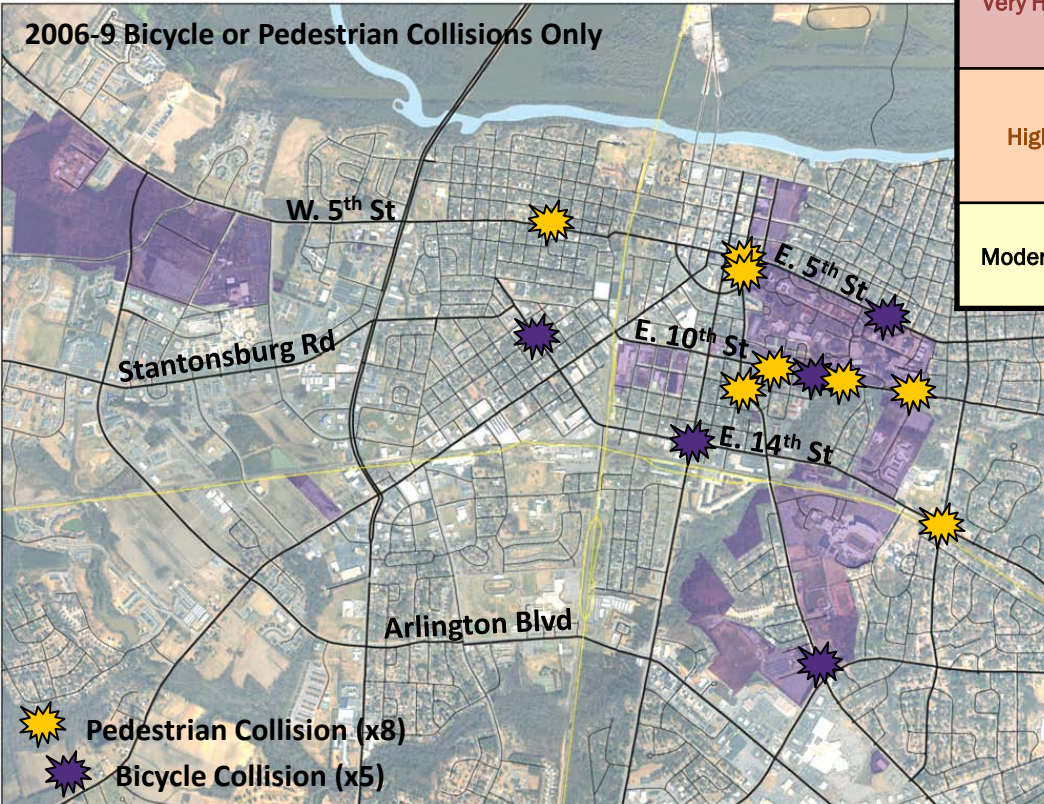


Transit, Parking, Pedestrian
MAB

Parking Master Planning Questions

- Should parking lot users be able to walk to East Campus?
- How convenient should parking be for out patients on Health Sciences Campus?
- Where should Visitor Parking be located?





Conflicts	Campus	Location
Very High	East	<ul style="list-style-type: none"> •E 10th St / College Hill Dr •Christenbury Gymnasium Transit Area •College Hill Dr / stairs to residence halls •S Cotanche St / 8th / 9th St (Student Rec)
High	East and Athletic	<ul style="list-style-type: none"> •14th St / Railroad Tracks / Berkley Rd •14th St / Residential Student Parking Lots •Founders Dr / Wright / Bate buildings •E 10th St / Retail Development
Moderate	East and Health Sciences	<ul style="list-style-type: none"> •E 5th St / Campus Perimeter (Neighborhood Apts) •S Cotanche St / Future Intermodal Transportation Center •Moye Blvd / Future Development

Pedestrian Master Planning Questions

- Which parking lots on East Campus are sacred?
- Which campus roads on East Campus are sacred?
- Where should the East Campus-Athletic Campus Connector be located?

**Transit, Parking, Pedestrian
MAB**