

Wright Plaza Location



“ECU is the best at...”

- Greek life
- Football
- Love the Mall

“ECU could improve...”

- Bus capacity
- Bus schedule reductions
- Bookstore, same size that was used to service 3000 students, now 27,000
- Parking is too far removed
- Busses do not run late enough to ride home from evening classes
- Freshman Parking (3 comments)
- Build a parking deck
- Senior citizen tuition cut-off.

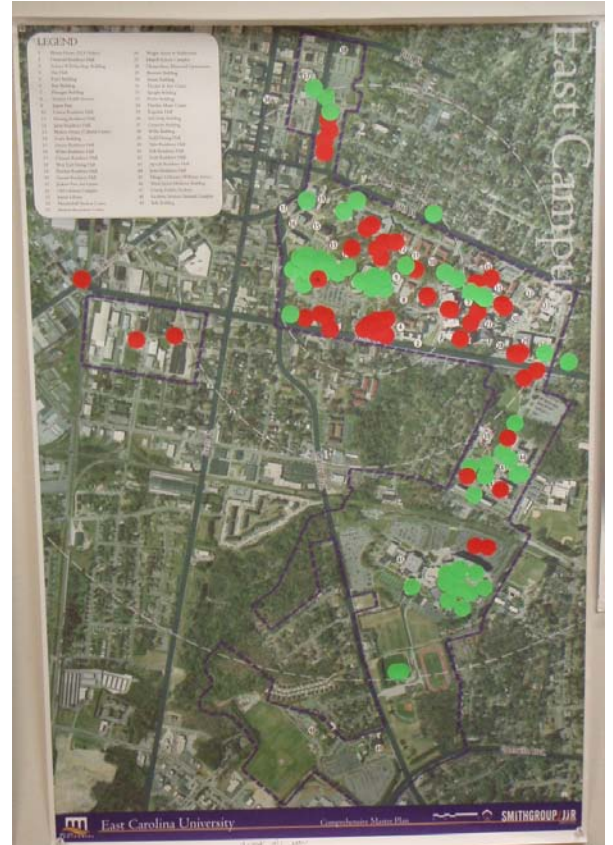
“Rants & Raves”

- Speed Trap on 10th street
- Greek life
- Book \$\$\$

NEXT STEPS

The SmithGroup/JJR team will review the issues identified and identify key concerns and reoccurring themes in the responses. These topics will be addressed as key stakeholder concerns in the Master Planning process. The team will also identify if there is greater research or interaction with interested stakeholders needed to more precisely identify key issues.

GRAPHICS



“Dot-Vote” Exercise Results

If this report does not agree with your records or understanding of this meeting, or if there are any questions, please advise the writer immediately in writing; otherwise, we will assume the comments to be correct.

P:\26472\00\Admin\Meetings\2009-09-01_Task2\WrapUp\2009-09-01_SG-JJR-Wright Plaza.doc

Distribution: DRAFT INTERNAL ONLY